

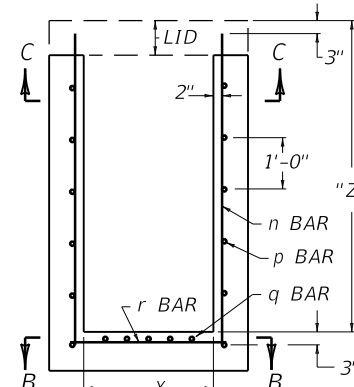
① ADDITIONAL STEEL REINFORCEMENT REQUIREMENTS  
(PIPE CHAMBER, H = 8' TO 15')

SIZE ②		NO. 5 STEEL BARS									
X	Y	③ BAR n		④ BAR p		BAR q		BAR r		LBS. ⑤	
		QTY.	LIN. FT.	QTY.	LIN. FT.	QTY.	LIN. FT.	QTY.	LIN. FT.	TOTAL	⑥
2'-0"	2'-0"	20								220	31
	2'-6"	22								245	35
	3'-0"	24								269	38
	3'-6"	26	6'-0"	7					2'-6"	294	41
	4'-0"	28								318	44
	4'-6"	30								343	47
	5'-0"	32								367	50
2'-6"	2'-0"	22								245	35
	2'-6"	24								270	38
	3'-0"	26	6'-0"	7					3'-0"	296	41
	3'-6"	28								321	44
	4'-0"	30								347	47
	4'-6"	32								373	50
	5'-0"	34								398	53
3'-0"	2'-0"	24								268	38
	2'-6"	26								295	41
	3'-0"	28	6'-0"	7					3'-6"	321	44
	3'-6"	30								348	47
	4'-0"	32								374	50
	4'-6"	34								401	53
	5'-0"	36								427	57
3'-6"	2'-0"	26								293	41
	2'-6"	28								320	44
	3'-0"	30	6'-0"	7					4'-0"	348	47
	3'-6"	32								376	50
	4'-0"	34								404	53
	4'-6"	36								431	56
	5'-0"	38								459	60
4'-0"	2'-0"	28								317	44
	2'-6"	30								346	47
	3'-0"	32	6'-0"	7					4'-6"	374	50
	3'-6"	34								404	53
	4'-0"	36								432	56
	4'-6"	38								460	60
	5'-0"	40								490	63
4'-6"	2'-0"	30								342	47
	2'-6"	32								371	50
	3'-0"	34	6'-0"	7					5'-0"	401	53
	3'-6"	36								431	56
	4'-0"	38								460	60
	4'-6"	40								490	63
	5'-0"	42								519	66

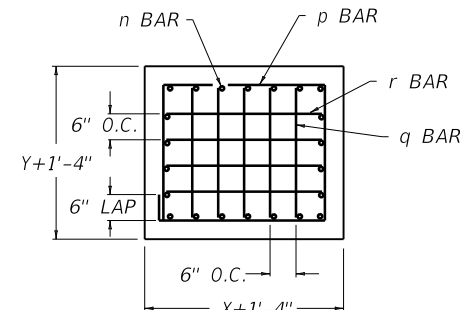
SIZE ②		NO. 5 STEEL BARS									
X	Y	③ BAR n		④ BAR p		BAR q		BAR r		LBS. ⑤	
		QTY.	LIN. FT.	QTY.	LIN. FT.	QTY.	LIN. FT.	QTY.	LIN. FT.	TOTAL	⑥
5'-0"	2'-0"	32								367	50
	2'-6"	34								398	53
	3'-0"	36	6'-0"	7					5'-6"	427	56
	3'-6"	38								459	60
	4'-0"	40								490	63
	4'-6"	42								519	66
	5'-0"	44								551	69

~ NOTES ~

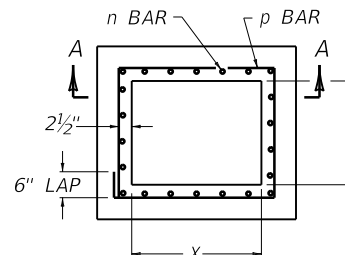
- ① BASED ON "Z" AS EQUAL TO 6'-0".
- ② SEE CUR. STD. DWGS. [RDB-270](#) AND [RDB-280](#) FOR LOCATION AND DIMENSIONS.
- ③ LENGTH OF "n" BAR IS ALWAYS SAME AS "Z" DIMENSION.
- ④ ADD OR SUBTRACT ONE "p" BAR PER EVEN FT. VARIANCE FROM 6'-0" "Z".
- ⑤ NO DEDUCTIONS HAVE BEEN MADE FOR PIPE.
- ⑥ ADD OR SUBTRACT LBS. STEEL PER FT. VARIANCE FROM 6'-0" "Z".
7. REINFORCEMENT SHALL HAVE A CLEAR DISTANCE OF 2" FROM THE FACE UNLESS OTHERWISE SHOWN.



SECTION A-A



SECTION B-B



SECTION C-C

(USE WITH C.B.I. A and C.B.I. B WHEN H = 8' TO 15')

USE WITH CUR. STD. DWGS.  
[RDB-270](#) [RDB-280](#)

KENTUCKY  
DEPARTMENT OF HIGHWAYS

BOX INLET  
PIPE CHAMBER  
(ADDITIONAL STEEL)

STANDARD DRAWING NO. [RDB-420-05](#)

SUBMITTED	<i>[Signature]</i>	12-01-15
DESIGNED BY	DATE OF DESIGN	DATE
APPROVED	<i>[Signature]</i>	12-01-15
	STATE HIGHWAY ENGINEER	DATE